

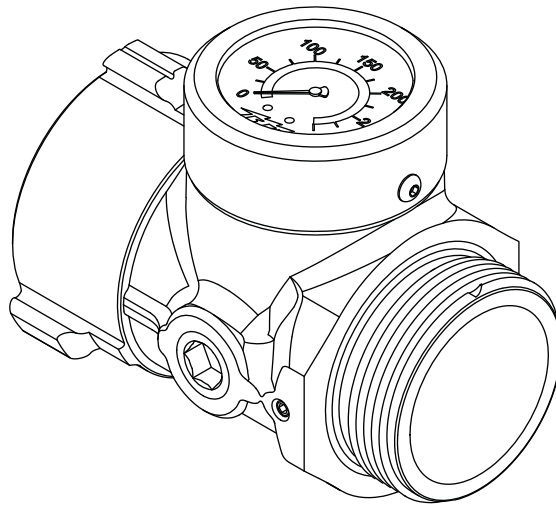


MANUAL: IN-LINE PIVOT GAUGE IN-LINE GAUGE

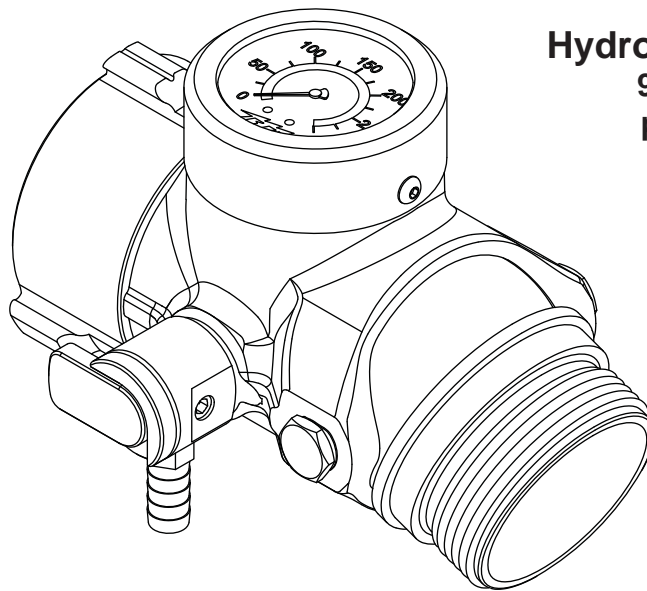
INSTRUCTIONS FOR INSTALLATION, SAFE OPERATION AND MAINTENANCE

⚠ WARNING

Understand manual before use. Operation of this device without understanding the manual and receiving proper training is a misuse of this equipment. Obtain safety information at www.tft.com



Operation Range:
Pressure Max 300 PSI (20bar)



Hydrostatic Proof Test:
900 PSI (62bar)
per NFPA 1965



PERSONAL RESPONSIBILITY CODE

The member companies of FEMSA that provide emergency response equipment and services want responders to know and understand the following:





1. Firefighting and Emergency Response are inherently dangerous activities requiring proper training in their hazards and the use of extreme caution at all times.
2. It is your responsibility to read and understand any user's instructions, including purpose and limitations, provided with any piece of equipment you may be called upon to use.
3. It is your responsibility to know that you have been properly trained in Firefighting and /or Emergency Response and in the use, precautions, and care of any equipment you may be called upon to use.
4. It is your responsibility to be in proper physical condition and to maintain the personal skill level required to operate any equipment you may be called upon to use.
5. It is your responsibility to know that your equipment is in operable condition and has been maintained in accordance with the manufacturer's instructions.
6. Failure to follow these guidelines may result in death, burns or other severe injury.







Fire and Emergency Manufacturers and Service Association
P.O. Box 147, Lynnfield, MA 01940 • www.FEMSA.org

1.0 MEANING OF SAFETY SIGNAL WORDS

A safety related message is identified by a safety alert symbol and a signal word to indicate the level of risk involved with a particular hazard. Per ANSI standard Z535.6-2011, the definitions of the four signal words are as follows:

	DANGER indicates a hazardous situation which, if not avoided, will result in death or serious injury.
	WARNING indicates a hazardous situation which, if not avoided, could result in death or serious injury.
	CAUTION indicates a potentially hazardous situation which, if not avoided, could result in minor or moderate injury.
	NOTICE is used to address practices not related to physical injury.

2.0 SAFETY

	The appliance may be damaged if frozen while containing significant amounts of water. Such damage may be difficult to detect visually and can lead to possible injury or death. Any time the appliance is subject to possible damage due to freezing, it must be hydrostatically tested by qualified personnel before being considered safe for use.
	This equipment is intended for use by trained personnel for fire fighting. Use for other purposes may involve hazards not addressed by this manual. Seek appropriate guidance and training to reduce risk of injury.
	Dissimilar metals coupled together can cause galvanic corrosion that can result in the inability to unscrew the threads and complete loss of thread engagement over time. Per NFPA 1962 (2013 edition), if dissimilar metals are left coupled together an anti-corrosive lubricant should be applied to the threads. Also the coupling should be disconnected and inspected at least quarterly.
	To prevent mechanical damage, do not drop or throw equipment.

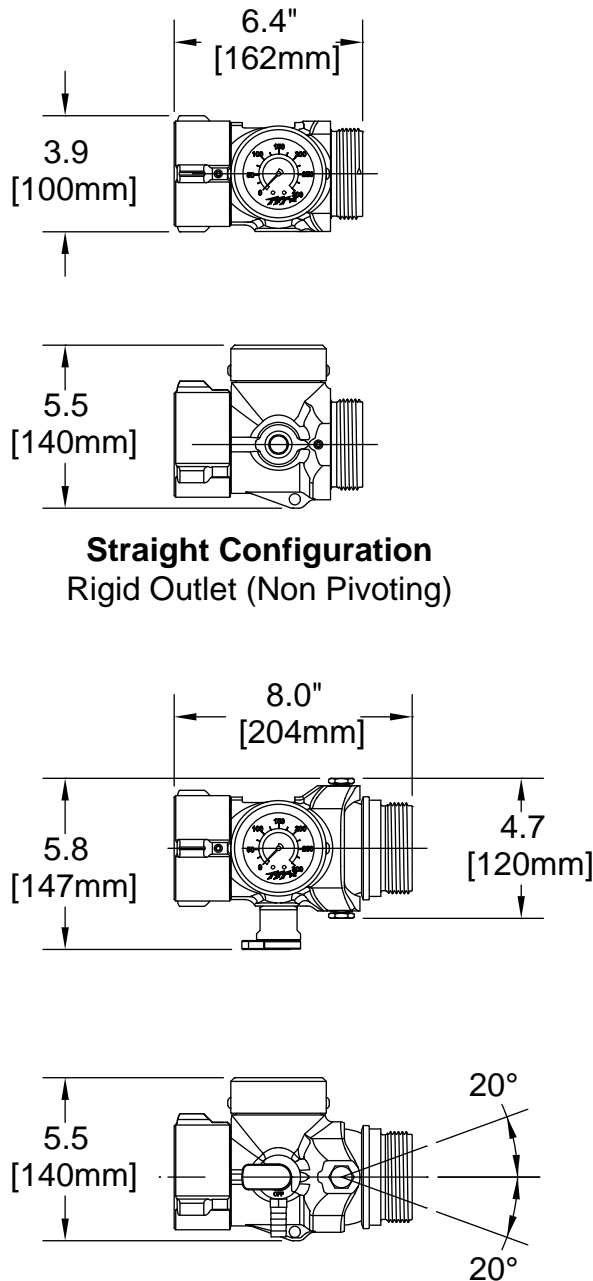
3.0 GENERAL INFORMATION

The Task Force Tips In-line Pivot Pressure Gauge is designed for use on standpipes, truck outlets, on the ground, or where having a pressure reading is advantageous. The In-line Pivot Pressure Gauge incorporates a liquid filled pressure gauge with an easy to read gauge face into a solid aluminum body, protecting the gauge from damage.

Built into the casting is a pitot pickup for an accurate reading of the total pressure in the center of the waterway. The gauge also includes a replaceable lens that protects the gauge face from damage. The lens can easily be changed if it becomes scratched or damaged.

The outlet is available with a pivoting joint that moves $\pm 20^\circ$ from center for controlling hose kinks on standpipes with horizontal or vertical discharge. Pivoting outlets cut the weight of hi-rise packs by eliminating a separate elbow. Fully pivoting the discharge changes the gauge reading by less than 5 PSI (0.3 bar) at 500 GPM (2000 L/min). Models with a rigid outlet (non-pivoting) are useful for straight in-line applications.

A full time swivel coupling allows the gauge face to be rotated into any direction while in use, allowing the gauge to be seen at all times. An optional drain valve can be purchased to also use as a pressure or air bleed (A1621-KIT) when needed. A cap and tether can also be purchased and added to protect the outlet threads when required.



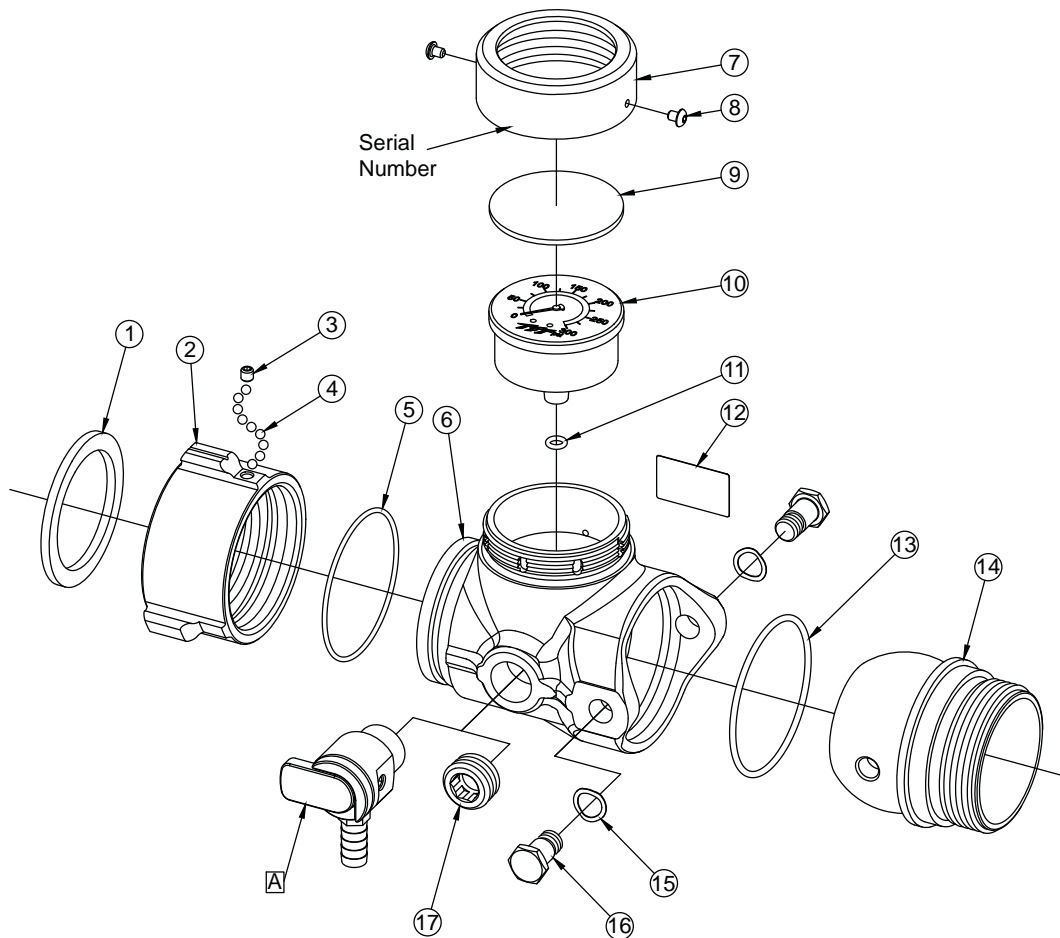
Straight Configuration
Rigid Outlet (Non Pivoting)

Pivoting Outlet
Shown With Optional Drain/bleed Valve

Figure 3.0 Gauge Dimensions

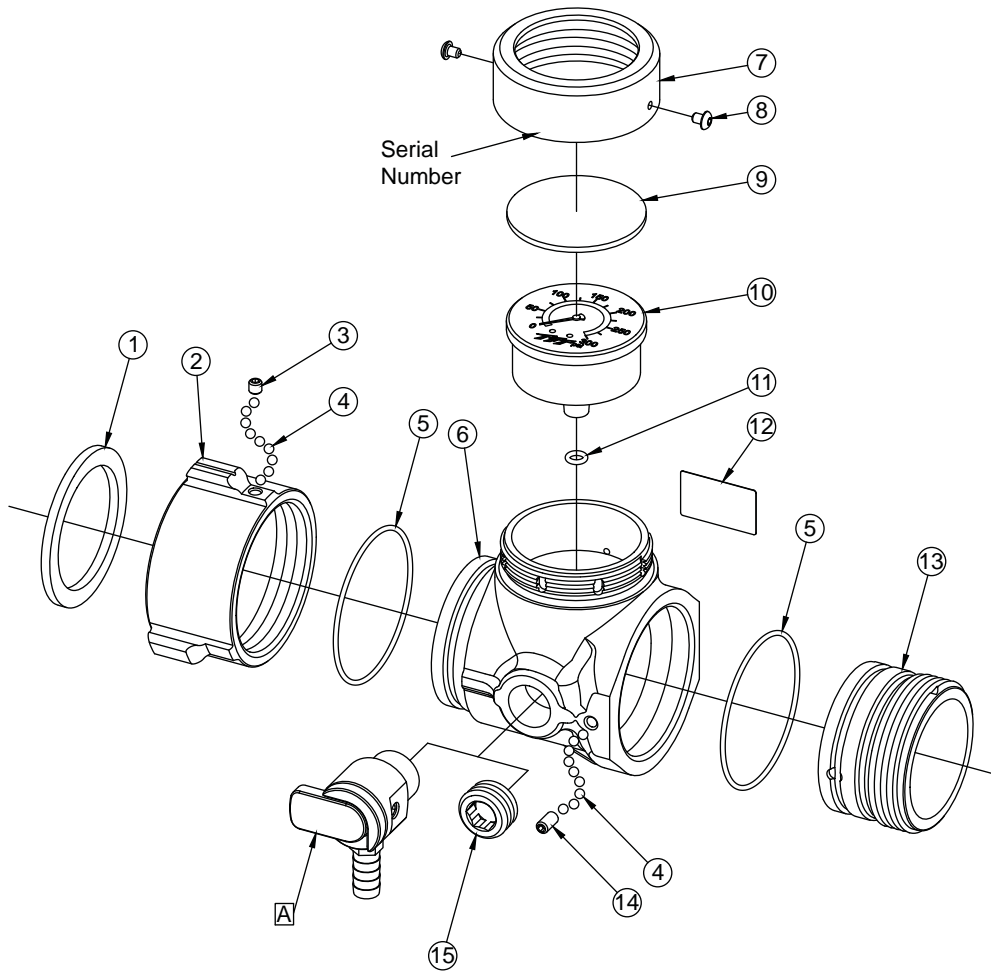
4.0 EXPLODED VIEW AND PARTS LIST

4.1 PIVOT IN-LINE PRESSURE GAUGE EXPLODED VIEW PARTS LIST



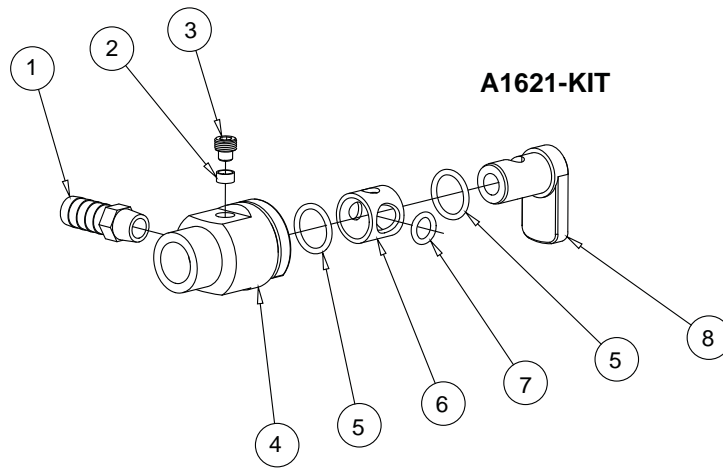
INDEX	DESCRIPTION	QTY.	PART #
1	GASKET - 2.5" HOSE COUPLING	1	V3190
2	COUPLING 2.5"F	1	P197*
3	1/4-28 X 1/4 SOCKET SET SCREW	1	VT25-28SS250
4	3/16" SS BALL	48	V2120
5	O-RING-151	1	VO-151
6	IN-LINE GAUGE BODY	1	J250
7	IN-LINE GAUGE COVER	1	J260
8	10-32 X 1/4 BUTTON HEAD SCREW	2	VT10-32BH250
9	GAUGE LENS	1	J262
10	PRESSURE GAUGE: 200PSI/14 BAR	1	J265
	PRESSURE GAUGE: 300PSI/21 BAR		J266
11	O-RING-108	1	VO-108
12	IN-LINE GAUGE NAME LABEL	1	J263
13	O-RING-235	1	VO-235
14	EXIT 2.5"M	1	XX310*
15	WAVE SPRING WASHER	2	VW740X550-16
16	SWIVEL TRUNNION	2	XX320
17	3/4"NPTM HEX SOCKET PLUG	1	XG410
A	DRAIN VALVE SUBASSEMBLY	1	A1621
* - CONSULT FACTORY FOR SPECIAL THREADS			

4.2 STRAIGHT IN-LINE PRESSURE GAUGE EXPLODED VIEW AND PARTS LIST



INDEX	DESCRIPTION	QTY.	PART #
1	GASKET - 2.5" HOSE COUPLING	1	V3190
2	COUPLING 2.5"F	1	P197*
3	1/4-28 X 1/4 SOCKET SET SCREW	1	VT25-28SS250
4	3/16" SS BALL (48 PER COUPLING RACE)	95	V2120
5	O-RING-151	2	VO-151
6	IN-LINE GAUGE BODY	1	J251
7	IN-LINE GAUGE COVER	1	J260
8	10-32 X 1/4 BUTTON HEAD SCREW	2	VT10-32BH250
9	GAUGE LENS	1	J262
10	PRESSURE GAUGE: 200PSI/14 BAR	1	J265
	PRESSURE GAUGE: 300PSI/21 BAR		J266
11	O-RING-108	1	VO-108
12	IN-LINE GAUGE NAME LABEL	1	J263
13	SPOUT HSBGM30 X 2.5"M	1	A4774*
14	1/4-28 X 1/2 SOCKET SET SCREW	1	VT25-28SS500
15	3/4"NPTM HEX SOCKET PLUG	1	XG410
A	DRAIN VALVE SUBASSEMBLY	1	A1621
* - CONSULT FACTORY FOR SPECIAL THREADS			

4.3 AIR VENT/DRAIN VALVE [A] VIEW AND PARTS LIST



INDEX	DESCRIPTION	QTY.	PART #
1	1/2" BARB X 1/4"NPTM NIPPLE	1	XX329
2	FOLLOWER	1	U251
3	3/8-24 X 3/8 DOG POINT	1	H515
4	DRAIN HOUSING	1	A1543
5	O-RING 115	2	VO-115
6	DRAIN SLEEVE	1	A1541
7	O-RING-110	1	VO-110
8	DRAIN LEVER	1	A1542

5.0 WARRANTY

Task Force Tips, Inc., 3701 Innovation Way, Valparaiso, Indiana 46383-9327 USA ("TFT") warrants to the original purchaser of its in-line pressure gauge ("equipment"), and to anyone to whom it is transferred, that the equipment shall be free from defects in material and workmanship during the five (5) year period from the date of purchase.

TFT's obligation under this warranty is specifically limited to replacing or repairing the equipment (or its parts) which are shown by TFT's examination to be in a defective condition attributable to TFT. To qualify for this limited warranty, the claimant must return the equipment to TFT, at 3701 Innovation Way, Valparaiso, Indiana 46383-9327 USA, within a reasonable time after discovery of the defect. TFT will examine the equipment. If TFT determines that there is a defect attributable to it, TFT will correct the problem within a reasonable time. If the equipment is covered by this limited warranty, TFT will assume the expenses of repair.

If any defect attributable to TFT under this limited warranty cannot be reasonably cured by repair or replacement, TFT may elect to refund the purchase price of the equipment, less reasonable depreciation, in complete discharge of its obligations under this limited warranty. If TFT makes this election, claimant shall return the equipment to TFT free and clear of any liens and encumbrances.

This is a limited warranty. The original purchaser of the equipment, any person to whom it is transferred, and any person who is an intended or unintended beneficiary of the equipment, shall not be entitled to recover from TFT any consequential or incidental damages for injury to person and/or property resulting from any defective equipment manufactured or assembled by TFT. It is agreed and understood that the price stated for the equipment is in part consideration for limiting TFT's liability. Some states do not allow the exclusion or limitation of incidental or consequential damages, so the above may not apply to you.

TFT shall have no obligation under this limited warranty if the equipment is, or has been, misused or neglected (including failure to provide reasonable maintenance) or if there have been accidents to the equipment or if it has been repaired or altered by someone else.

THIS IS A LIMITED EXPRESS WARRANTY ONLY. TFT EXPRESSLY DISCLAIMS WITH RESPECT TO THE EQUIPMENT ALL IMPLIED WARRANTIES OF MERCHANTABILITY AND ALL IMPLIED WARRANTIES OF FITNESS FOR A PARTICULAR PURPOSE. THERE IS NO WARRANTY OF ANY NATURE MADE BY TFT BEYOND THAT STATED IN THIS DOCUMENT.

This limited warranty gives you specific legal rights, and you may also have other rights which vary from state to state.