

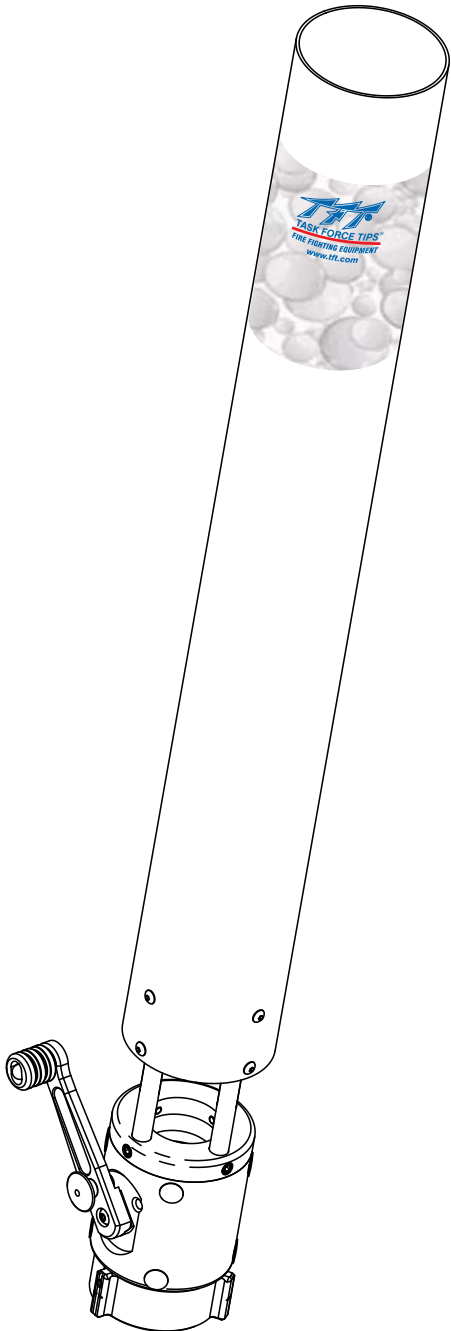


MANUAL: Dual Flow LX Foam Nozzle

INSTRUCTIONS FOR SAFE OPERATION AND MAINTENANCE

⚠ WARNING

Read instruction manual before use. Operation of the Dual Flow LX Foam Nozzle without understanding the manual and receiving proper training can result in injury and is a misuse of this equipment. This manual should be kept available to all operating and maintenance personnel.



MECHANICAL SPECIFICATIONS		
	US	METRIC
WEIGHT	24 lbs	11 kg
LENGTH	5 ft	1.5 m
LOW FLOW SETTING	K=66 790 gpm @ 145 psi	50 l/s @ 1000 kPa 3000 l/min @ 10 bar
HIGH FLOW SETTING	K=132 1580 gpm @ 145 psi	100 l/s @ 1000 kPa 6000 l/min @ 10 bar
MAX OPERATING PRESSURE	200 psi	1400 kPa 14 bar
OPERATING TEMP RANGE	-25 to 135°F	-32 to 57°C
MONITOR COMPATIBILITY	MONSOON	

⚠ DANGER

PERSONAL RESPONSIBILITY CODE

The member companies of FEMSA that provide emergency response equipment and services want responders to know and understand the following:

1. Firefighting and Emergency Response are inherently dangerous activities requiring proper training in their hazards and the use of extreme caution at all times.
2. It is your responsibility to read and understand any user's instructions, including purpose and limitations, provided with any piece of equipment you may be called upon to use.
3. It is your responsibility to know that you have been properly trained in Firefighting and /or Emergency Response and in the use, precautions, and care of any equipment you may be called upon to use.
4. It is your responsibility to be in proper physical condition and to maintain the personal skill level required to operate any equipment you may be called upon to use.
5. It is your responsibility to know that your equipment is in operable condition and has been maintained in accordance with the manufacturer's instructions.
6. Failure to follow these guidelines may result in death, burns or other severe injury.



Fire and Emergency Manufacturers and Service Association
P.O. Box 147, Lynnfield, MA 01940 • www.FEMSA.org

TASK FORCE TIPS, INC.
MADE IN USA • www.tft.com

3701 Innovation Way, Valparaiso, IN 46383-9327 USA
800-348-2686 • 219- 462-6161 • Fax 219-464-7155

▲ WARNING Lack of foam can place nozzle operator at risk of injury or death. Establish foam flow before advancing into hazardous situations. Assure against running out of foam. Check concentrations level periodically and keep an adequate supply on hand.

▲ WARNING Improper use of foam can result in injury, death, or damage to the environment. Follow foam concentrate manufacturer's instructions and fire service training to avoid:

- Using wrong type of foam on a fire (i.e. Class A foam on a Class B fire)
- Mishandling of concentrates, some of which are flammable
- Plunging foam into pools of burning liquid fuels
- Causing environmental damage
- Directing foam into face

▲ WARNING Any alteration to the Dual Flow LX Foam Nozzle or its markings constitutes a misuse of this product and could diminish safety.

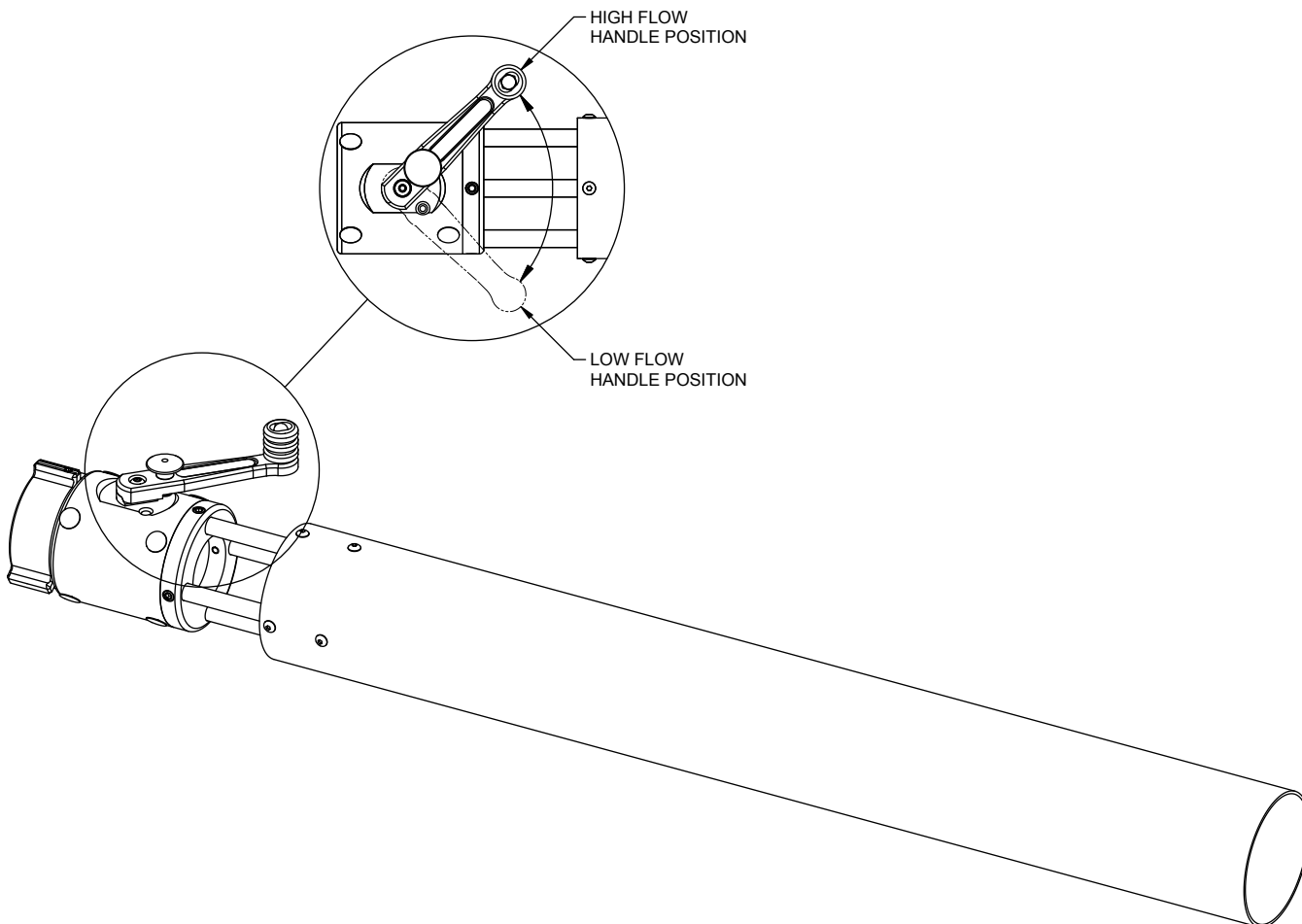
▲ CAUTION Nozzle must be properly connected. Mismatched or damaged threads may cause nozzle to leak or uncouple under pressure and could cause injury.

▲ CAUTION Dissimilar metals coupled together can cause galvanic corrosion that can result in the inability to unscrew the threads, or the complete loss of thread engagement over time. Per NFPA 1962 (2008 edition), if dissimilar metals are left coupled together, an anti-corrosive lubricant should be applied to the threads. Also the couplings should be disconnected and inspected at least quarterly.

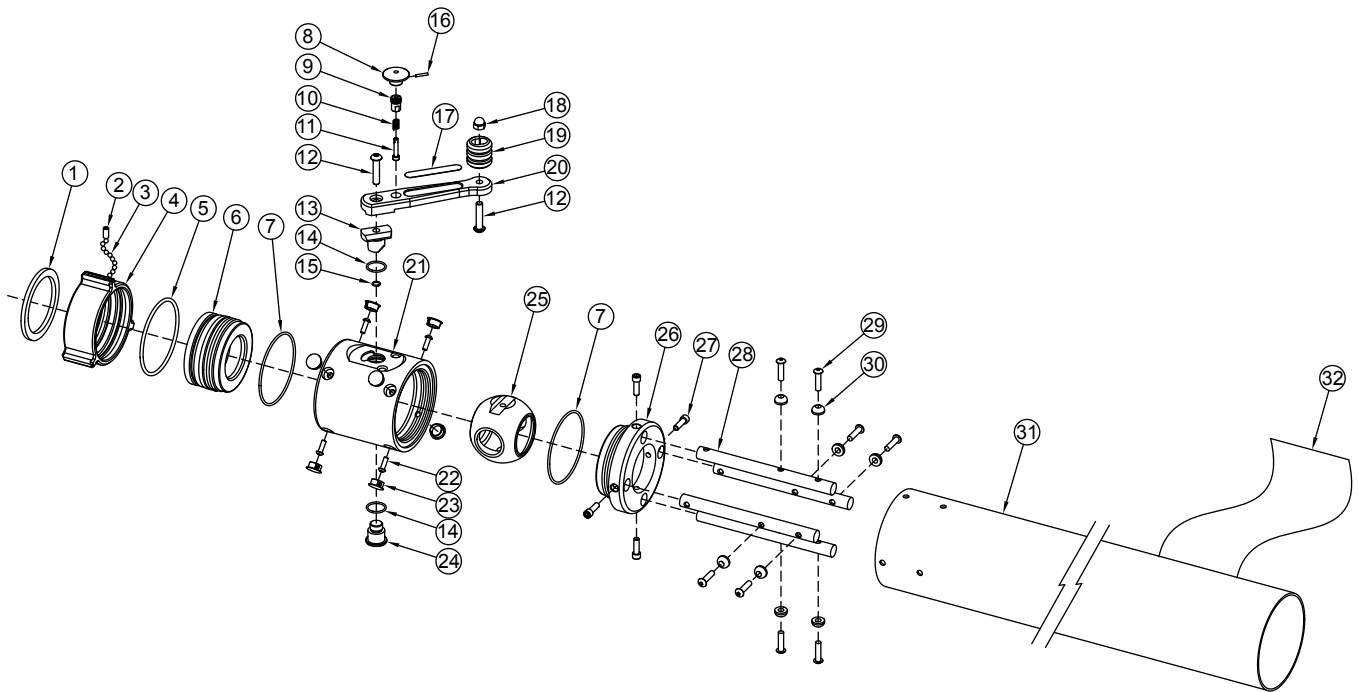
OPERATION

The Dual Flow Nozzle flows 1585 gpm and 800 gpm at 150 psi. To switch between flows, pull the pull-pin and move the handle to the desired flow. The pull-pin locks the ball at the rated flows. There is no shutoff valve in the nozzle.

The nozzle comes standard with a 3.5"NH female rocker lug coupling.



EXPLODED VIEW AND PARTS LIST



ITEM	DESCRIPTION	QTY	PART #
1	GASKET - 3.5" HOSE COUPLING	1	V3190
2	5/16-24 X 5/8 SOCKET SET SCREW	1	VT31-24SS625
3	1/4" SS BALL	54	V2125
4	COUPLING 3.5"NH ROCKERLUG	1	MS687N
5	O-RING-348	1	VO-348
6	FOAM TUBE BACK RING	1	FX570
7	O-RING-244	2	VO-244
8	PULL KNOB	1	XX341
9	PULL PIN HOUSING	1	FX575
10	PULL PIN SPRING	1	X345
11	PULL PIN	1	XX340
12	3/8-16 X 1-3/4 BUTTON HEAD SCREW	2	VT37-16BH1.7
13	TRUNNION	1	FX550
14	O-RING-120	2	VO-120
15	O-RING-012	1	VO-012
16	1/8 X 3/4 HDP SPIROL PIN	1	VP125X750H

ITEM	DESCRIPTION	QTY	PART #
17	FOAM TUBE HANDLE LABEL	1	FX585
18	3/8-16 ACORN NUT	1	VT37-16AC
19	SINGLE HANDLE TOP	1	XXL625
20	HANDLE	1	FX535
21	FOAM TUBE NOZZLE BODY	1	FX530
22	1/4-28 X 3/4 BUTTON HEAD SCREW	4	VT25-28BH750
23	DOMEPLUG	8	VM4122
24	LOWER TRUNNION	1	FX545
25	SELECTOR BALL	1	FX560
26	FRONT RING FOAM TUBE NOZZLE	1	FX525
27	5/16-18 X 1 SOCKET HEAD SCREW	4	VT31-18SH1.0
28	STANCHION	4	FX520
29	5/16-18 X 1-1/4 BUTTON HEAD SCREW	8	VT31-18BH1.2
30	SPACER	8	FX510
31	EXPANSION TUBE	1	FX505
32	FOAM TUBE BARREL LABEL	1	FX580

WARRANTY

Task Force Tips, Inc., 3701 Innovation Way, Valparaiso, IN 46383-9327 USA ("TFT") warrants to the original purchaser of its Foam Tubes ("equipment"), and to anyone to whom it is transferred, that the equipment shall be free from defects in material and workmanship during the five (5) year period from the date of purchase.

TFT's obligation under this warranty is specifically limited to replacing or repairing the equipment (or its parts) which are shown by TFT's examination to be in a defective condition attributable to TFT. To qualify for this limited warranty, the claimant must return the equipment to TFT, at 3701 Innovation Way, Valparaiso, IN 46383-9327 USA, within a reasonable time after discovery of the defect. TFT will examine the equipment. If TFT determines that there is a defect attributable to it, TFT will correct the problem within a reasonable time. If the equipment is covered by this limited warranty, TFT will assume the expenses of repair.

If any defect attributable to TFT under this limited warranty cannot be reasonably cured by repair or replacement, TFT may elect to refund the purchase price of the equipment, less reasonable depreciation, in complete discharge of its obligations under this limited warranty. If TFT makes this election, claimant shall return the equipment to TFT free and clear of any liens and encumbrances.

This is a limited warranty. The original purchaser of the equipment, any person to whom it is transferred, and any person who is an intended or unintended beneficiary of the equipment, shall not be entitled to recover from TFT any consequential or incidental damages for injury to person and/or property resulting from any defective equipment manufactured or assembled by TFT. It is agreed and understood that the price stated for the equipment is in part consideration for limiting TFT's liability. Some states do not allow the exclusion or limitation of incidental or consequential damages, so the above may not apply to you.

TFT shall have no obligation under this limited warranty if the equipment is, or has been, misused or neglected (including failure to provide reasonable maintenance) or if there have been accidents to the equipment or if it has been repaired or altered by someone else.

THIS IS A LIMITED EXPRESS WARRANTY ONLY. TFT EXPRESSLY DISCLAIMS WITH RESPECT TO THE EQUIPMENT ALL IMPLIED WARRANTIES OF MERCHANTABILITY AND ALL IMPLIED WARRANTIES OF FITNESS FOR A PARTICULAR PURPOSE. THERE IS NO WARRANTY OF ANY NATURE MADE BY TFT BEYOND THAT STATED IN THIS DOCUMENT.

This limited warranty gives you specific legal rights, and you may also have other rights which vary from state to state.